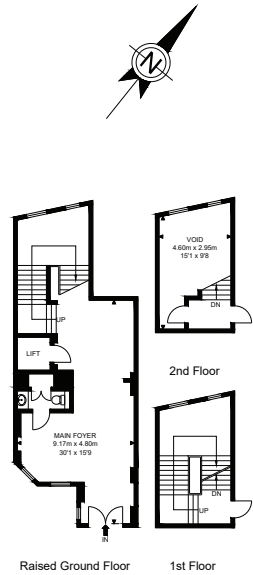
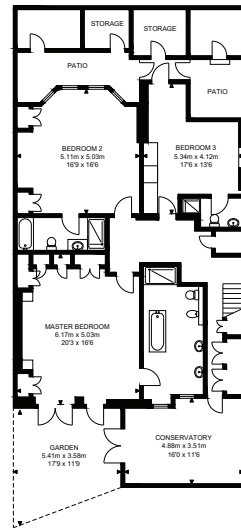


Kensington Court

APPROX. GROSS INTERNAL FLOOR AREA 8463.55 SQ FT / 786.29 SQM
 APPROX. GROSS EXTERNAL FLOOR AREA 373.50 SQ FT / 34.7 SQM

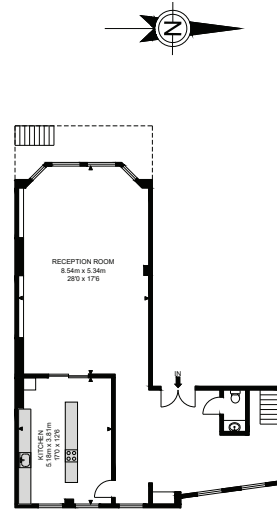


APPROX. GROSS INTERNAL FLOOR AREA 846.0 SQ FT / 78.60 SQM

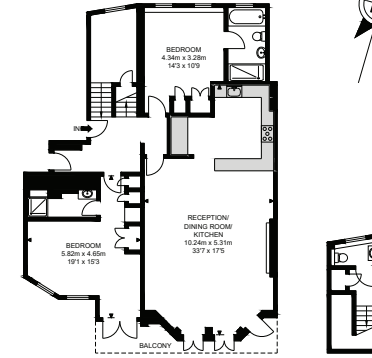


Lower Ground Floor

APPROX. GROSS INTERNAL FLOOR AREA 2815.30 SQ FT / 261.55 SQM
 APPROX. GROSS EXTERNAL FLOOR AREA 273.40 SQ FT / 25.40 SQM



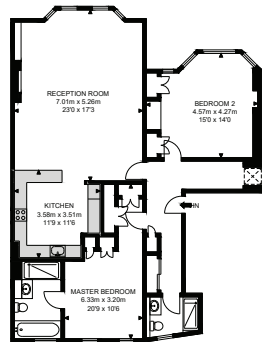
Ground Floor



1st Floor

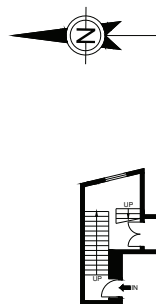
Mezzanine

APPROX. GROSS INTERNAL FLOOR AREA 1219.0 SQ FT / 113.26 SQM
 APPROX. GROSS EXTERNAL FLOOR AREA 75.34 SQ FT / 7.0 SQM

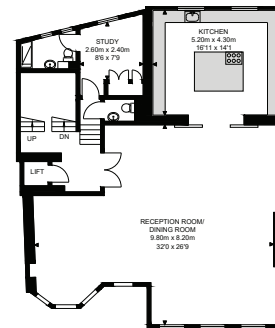


2nd Floor

APPROX. GROSS INTERNAL FLOOR AREA 1086.0 SQ FT / 101.89 SQM

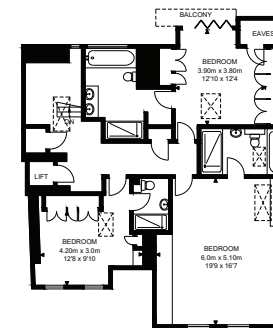


2nd Floor



3rd Floor

APPROX. GROSS INTERNAL FLOOR AREA 2487.0 SQ FT / 231.0 SQM
 APPROX. GROSS EXTERNAL FLOOR AREA 24.75 SQ FT / 2.30 SQM



4th Floor

Whilst every attempt has been made to ensure the accuracy of the floor plan contained here, measurements of doors, windows, rooms and any other items are approximates and no responsibility is taken for any error, omission or mis-statement. This plan is for illustrative purposes only and should be used as such by any prospective purchaser. The service, system and appliances shown have not been tested and no guarantee as to their operability or efficiency can be given.